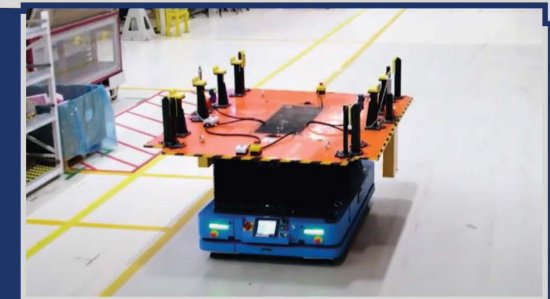
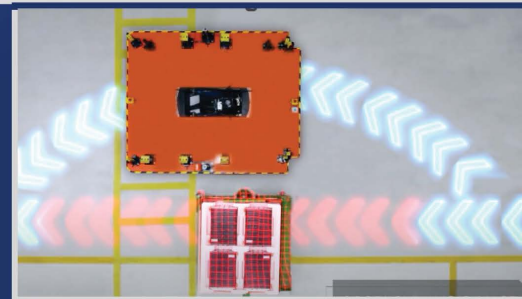


# U2000



Introducing the U2000 model AMRs from Bluepath Robotics, revolutionizing material handling in warehouses and factories. With a 2-ton carrying capacity, our Underdrive type U2000 models offer unparalleled strength. Adaptability is key, these AMRs seamlessly integrate with various lift systems, conveyors, and fixtures for diverse applications. Achieve pinpoint accuracy with  $\pm 1$  cm localization precision powered by our cutting-edge hybrid localization software. Plus, rest assured with VDA5050 protocol compatibility and PLd safety certification, ensuring top-notch safety features for peace of mind.

## WHAT WE OFFER?



### Cutting Edge Technologies

Often leading to more efficient, sustainable, and ground breaking solutions.



### End-to-End Solutions

Comprehensive and integrated approaches that cover the entire process.



### Customer satisfaction - After Sales

Providing expertise and guidance to users in handling technical challenges or operational issues.



### SAFETY

90% chance of a serious accident occurring.



### EFFICIENCY

24/7 robots, no human error.



### ROI & PAYBACK TIME

Payback under 2 years, depending on labor costs.

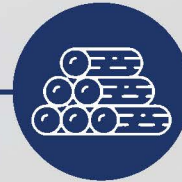


### INTEGRATION

Connects seamlessly with existing systems & PLCs



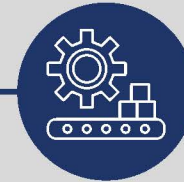
**Automotive**  
Industry



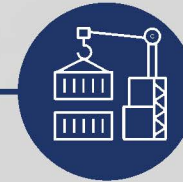
**Wood - Paper**  
Industry



**Food & Beverage**  
Industry



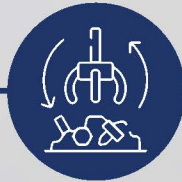
**Manufacturing**  
Industry



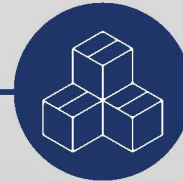
**Logistic**  
Industry



**Energy**  
Industry



**Metal**  
Industry



**Consumables**  
Industry



**Chemical**  
Industry



**Textile**  
Industry

## Reference Data



**Dimensions**  
1690 x 1195 x 375mm



**Load Capacity**  
2000 kg



**Drive Types**  
Differential



**Battery Capacity**  
80 Ah



**Max. Speed**  
1.5 m/s



**Load Handling**  
Unit Load



**VDA5050**  
**Compatibility**  
YES



**Object**  
**Detection**  
YES



**3D Obstacle**  
**Avoidance**  
YES



**Navigation Type**  
**(Hybrid)**  
Visual Slam , Laser Slam,  
Line tracking



**Precise**  
**Docking**  
YES



**Safe Remote**  
**On/Off**  
YES

# Technical Specifications



## PERFORMANCE

Max. Payload	2000 kg
Max. Speed	1.5 m/s
Navigation Type	Visual Slam , Laser Slam, Line tracking
Position Accuracy	+ - 1 cm
Max. Turning Speed	0.8 m/s



## FEATURES

Obstacle Avoidance	Yes
3D Object Detection	Yes
Dynamic Map Update	Yes
Remote On/off	Yes
VDA5050 Compatability	Yes
Precise Docking	Yes



## ENERGY SYSTEM

Battery Capacity	80 Ah
Runtime	12 hr
Max. Charge Rate	60 A
Nominal Battery Voltage	52,8 V
Battery Charging Options	Wireless Charging, Manual Charging



## AMR Body

Drive Types	Differential
Dimensions	1690 x 1195 x 375mm
Weight	450
Ground Clearance	30mm
Special Equipments	Roller Conveyor, electrical lift, hydraulic lift.



## SAFETY SYSTEM

Safe PLC	Safe IO module , Motion Control Module
Adaptive Fieldsets	Intelligent PL-d rated switching fieldsets
Speed Monitoring	Speed tracking with safe encoder
Standart Compliance	ISO EN 12100, ISO EN 13849-1,ISO 3691-1 (supercedes EN 1525),EN 60204-1, CE, FCC
Safe Remote On/off	Yes



## ENVIROMENT

Temperature	-10 to 50
Max. Humidity	95% , non-condensing



Bluepath Robotics not only transforms material handling but also elevates your business. Our success stories and references are a testament to our commitment—delivering not just products but comprehensive solutions that enhance operational excellence. Join the Bluepath family for reliability, innovation, quality, and unparalleled cost-efficiency

